

## ST DYMPNA'S PRIMARY SCHOOL - ASPLEY, QLD



### ABOUT THE BUSINESS

With significant student numbers, St Dymphna's Primary School has over sixty staff, including a leadership team consisting of Principal, APA (Assistant Principal Administration) and APRE (Assistant Principal Religious Education). Their well-trained and dedicated staff offer high-quality teaching and learning in a very well-resourced and supportive environment. The school actively supports a range of social justice pursuits including Caritas, St. Vincent de Paul, Catholic Mission, Aspley Care (Parish outreach group) with students assisting with hospitality and entertainment for the adjacent Respite Centre.

### THE REQUIREMENTS

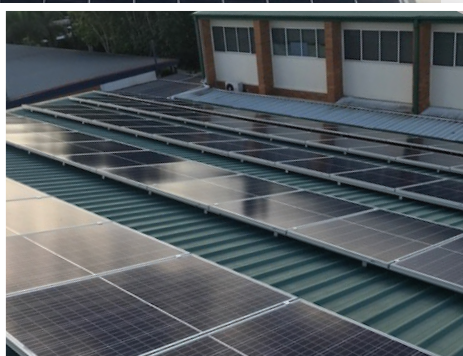
Being a reasonably large school, the monthly power bill was considerable. With approval received to expand the campus further, the school knew it was time to take action to mitigate their spiralling energy costs.

It was determined to engage some solar power providers to ascertain whether or not solar would provide a financially viable means of managing their energy costs.

### THE SOLAHART SOLUTION

St Dymphna's Primary School had already received quotations from alternate solar power providers. The network protection relay requirements for the site were significant and required extremely careful technical design in order to provide an effective solution.

Wendy Seeto and her team at Solahart Strathpine provided exceptional technical expertise, and this, coupled with their outstanding reputation saw them awarded the contract.



INSTALLATION BY SOLAHART STRATHPINE



94kW PV System



Solar Panels:  
336 x REC 280W TwinPeak Panels



Inverter:  
2 x 25kW SMA Sunny Tripower + 1 x 20kW SMA Sunny Tripower

 [www.solahart.com.au](http://www.solahart.com.au)

 [facebook.com/SolahartAust](https://facebook.com/SolahartAust)

 1300 136 603